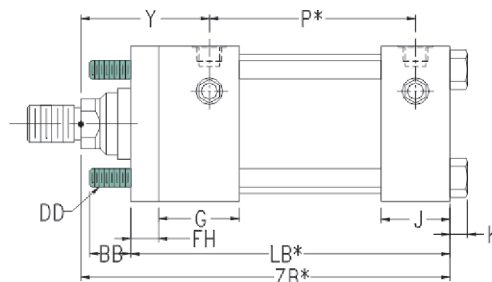
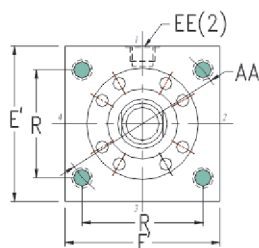
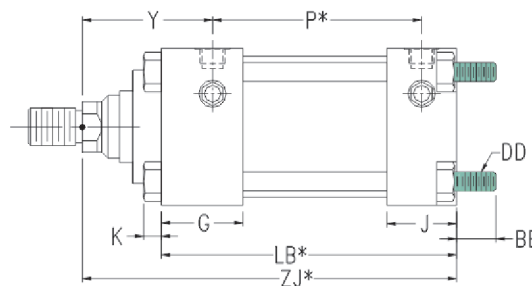
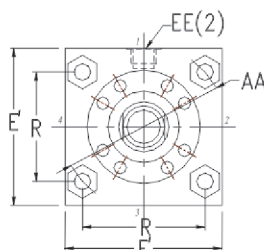


210 Bar Standard Cylinder Mounting : Extended Tie Rod

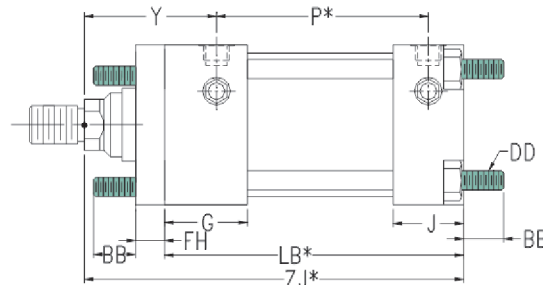
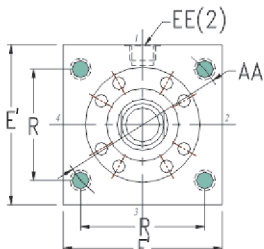
Head End Tie Rods
Extended
(ISO MX3)



Cap End Tie Rods
Extended
(ISO MX2)



Tie Rods Extended
Both Ends
(ISO MX1)



Mounting Dimensions

Bore Dia.	AA	BB	DD	E	EE BSP/G INCHES	FH	G	K	J	LB*	P*	R	Y	ZB*	ZJ*
25	40	19	M 5 x 1.8	40 ¹	1/4	10	40	4	25	89	53	28.3	50	118	114
32	47	24	M 6 x 1	45 ¹	1/4	10	40	5	25	93	56	33.2	60	133	128
40	59	35	M 8 x 1	63	3/8	10	45	6.5	38	118	73	41.7	62	159.5	153
50	74	46	M 12 x 1.25	75	1/2	16	45	10	38	118	74	52.3	67	169	159
63	91	46	M 12 x 1.25	90	1/2	16	45	10	38	120	80	64.3	71	178	168
80	117	59	M 16 x 1.5	115	3/4	20	50	13	45	139	93	82.7	77	203	190
100	137	59	M 16 x 1.5	130	3/4	22	50	13	45	146	101	96.9	82	216	203
125	178	81	M 22 x 1.5	165	1	22	58	18	58	175	117	125.9	86	250	232
160	219	92	M 27 x 2	205	1	25	58	22	58	188	130	154.9	86	267	245
200	269	115	M 30 x 2	245	1 1/4	25	76	24	76	242	165	190.2	98	323	299

All dimensions in millimetres unless otherwise stated.

* Add stroke to all starred dimensions.

¹ Head depth increased by 5mm to accommodate port on 25mm and 32mm bore cylinders.