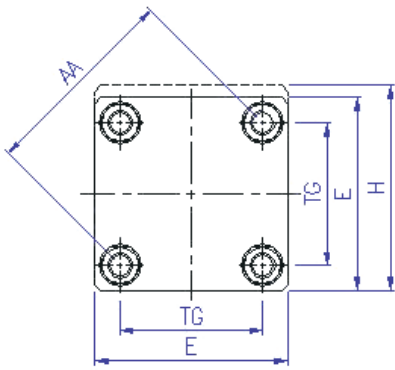
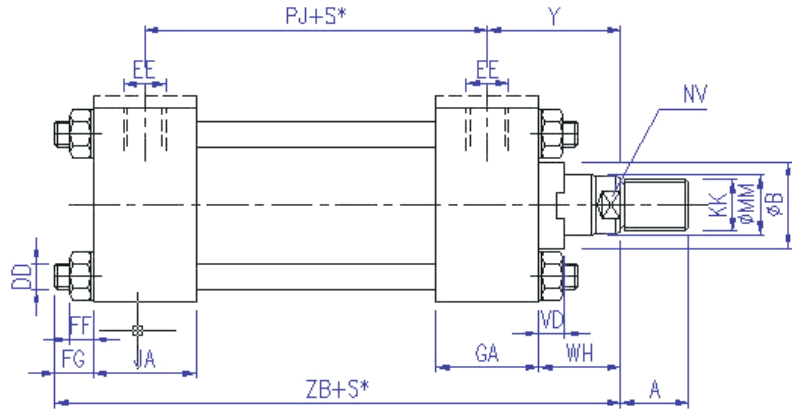


210 Bar Standard Cylinder Mounting : PHE Basic Version

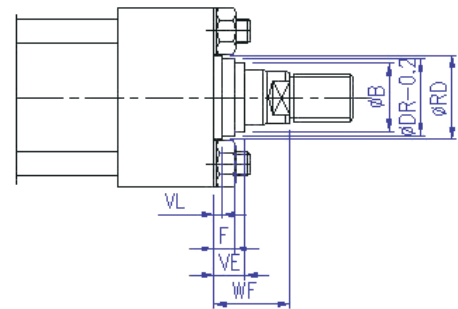


Cylinder Ø 25-100



* S = Stroke

Cylinder Ø 125-200



Cylinder Ø	Piston-rod ØMM	Thread KK	A h15	B* h15	E	F Max	H	Y ±2	AA	DD	EE	FF Max	FG Max	GA	JA	NV	PJ**	RD f8	TG	VD	VE Max	VL ±2	WF ±2	WH	ZB Max
25	12 18	M 10 x 1.25	14	24 30	40		45	50	40	M5	G 1/4	5	7	50	27	10	53		28.3	6 6				15	121
32	14 22	M 12 x 1.25	16	26 34	45		50	60	47	M6	G 1/4	6.5	9	50	27	12	56		33.2	8 9				25	137
40	18 28	M 14 x 1.5	18	30 42	63			62	59	M8	G 3/8	8	13	59	38	14	73		41.7	8 13				25	166
50	22 36	M 16 x 1.5	22	34 50	75			67	74	M12	G 1/2	12	17	63	38	17	74		52.3	9 9				25	176
63	28 45	M 20 x 1.5	28	42 60	90			71	91	M12	G 1/2	12	17	62	38	22	80		64.3	13 10				32	185
80	36 56	M 27 x 2	36	50 72	115			77	117	M16	G 3/4	16	22	71	45	28	93		83	9 14				31	212
100	45 70	M 33 x 2	45	60 88	130			82	137	M16	G 3/4	16	22	76	48	36	101		97	10 14				35	225
125	56 90	M 42 x 2	56	72 108	165	22		86	178	M22	G1	18	28	58	58	46	117	105 150	126		32	5	57		260
160	70 110	M 48 x 2	63	88 133	205	25		86	219	M27	G1	22	34	64	64	60	130	125 170	155		32	5	57		279
200	90 140	M 64 x 3	85	108 163	245	25		98	269	M30	G1 1/4	24	37	86	86	75	165	150 210	190		32	5	57		336

* Cylinder 25-100mmØ have tolerance f9

** Tolerance PJ+S*± 1.25